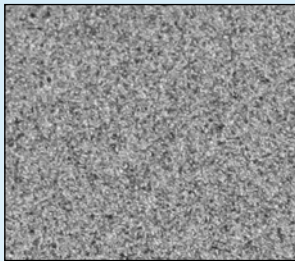
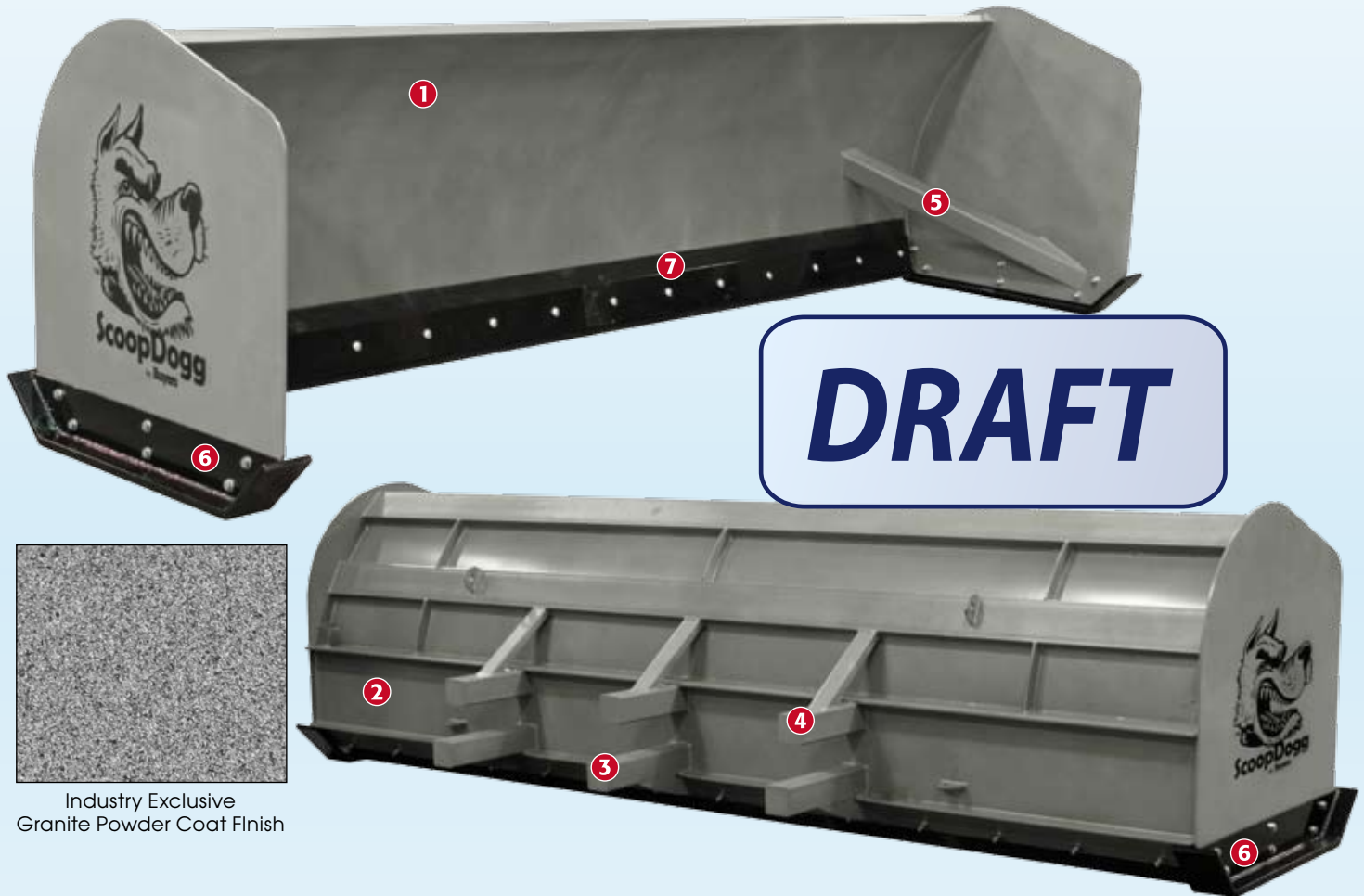




Snow Pushers

Loader • Backhoe • Skid-Steer



Industry Exclusive
Granite Powder Coat Finish

1 Powder Coat Finish, "Industry Exclusive", for durability and corrosion resistance

2 Exclusive Extreme-Duty H-Beam Design. 14" push beam for superior support. We put support where it's needed most. Engineered for strength.

3 Extra Durable Lower Posts. Bottom support posts are fully welded giving the posts the exceptional strength. This keeps the post higher off the ground. In case of accidental roll back, the bottom post does not get destroyed.

4 Extreme-Duty Upper Posts. Upper post support tubes eliminate the need for costly channel rolls. They are fully seam-welded

and spaced for maximum effectiveness in lending support to the overall strength of the pusher.

5 3" inside posts and 3/8" side plates, help prevent damage to sides from accidental impact during extreme operation.

6 Extreme-Duty Wear Shoes. Wear shoes are made from abrasion resistant steel for far greater wear life than most competitor's wear shoes.

7 Rubber Compound Cutting Edge. The right edge for all your needs.
1½" x 10" (loader and backhoe models)
1" x 8" (skid-steer models)

specifications subject to change



Snow Pushers

Loader • Backhoe • Skid-Steer



LOADER MODEL PUSHER

(Moldboard 48" x 3/16". Side plates 48" x 47" x 3/8")

Part No.	Width	Weight	Loader Size (Min.)**	Capacity*
2601012	12'	2,200 lbs.	1 yd. Loader	15 yd.
2601014	14'	2,400 lbs.	1.5 yd. Loader	18 yd.
2601016	16'	2,600 lbs.	2.5 yd. Loader	21 yd.

Standard Features: Universal Attachment System, 1½" x 10" Rubber Cutting Edge, 6" x 1" Abrasion Resistant Wear Shoes, Fully Welded Construction.



BACKHOE MODEL PUSHER

(Moldboard 36" x 3/16". Side plates 36" x 36" x 3/8")

Part No.	Width	Weight	Loader Size (Min.)**	Capacity*
2602012	12'	1,450 lbs.	4WD Backhoe	11 yd.
2602014	14'	1,600 lbs.	Large 4WD Backhoe	13 yd.

Standard Features: Universal Attachment System, 1½" x 10" Rubber Cutting Edge, 5" x ¾" Abrasion Resistant Wear Shoes, Fully Welded Construction.



SKID-STEER MODEL PUSHER

(Moldboard 36" x 3/16". Side plates 36" x 36" x 3/8")

Part No.	Width	Weight	Machine SAF Lift Cap (Min)**	Capacity*
2603008	8'	950 lbs.	1,700 lbs.	7 yd.
2603010	10'	1,125 lbs.	2,000 lbs.	9 yd.

Standard Features: Universal Skid Steer Quick Coupler, 1" x 8" Rubber Cutting Edge, 5" x ¾" Abrasion Resistant Wear Shoes, Fully Welded Construction.



rear view

*Estimated Number for Snow Only.

**Recommendation varies on Condition of Machine. Any modifications are on a per quote basis.